

Data sheet

HP Device Manager

Keep it simple



Make it easy to deploy, manage, and maintain your install base with HP Device Manager, a value-added software tool included exclusively for HP Thin Clients.

Remote management.

Deploy gateways and FTP repositories strategically, and view and manage your entire HP thin client install base from anywhere through a network connection.

Use your IT time wisely.

Be more productive, maximize your budget, and reduce employee downtime with a software tool that enables troubleshooting and issue resolution from a central location.

Streamline your thin clients.

Quickly and efficiently deliver add-ons, drivers, and Service Pack updates across your whole environment with just a few clicks.

Easy-to-use GUI.

Quickly view the details of every HP thin client—onsite or remotely—with a new graphical user interface that loads quickly and is simple to navigate.

One tool, many functions.

Get a range of management and reporting functions, including:

- configuration
- automatic device discovery
- device grouping for easy recognition
- security certificate assignments
- FTP loading of images

—all from one interface. Even get an exportable “snapshot” of all devices to more easily manage inventory.

Customize administration tasks.

Keep administrators focused and make their jobs easier by assigning them to select groups of thin clients and controlling their permissions all the way down to individual tasks.

Click [here](#) to download HP Device Manager.

HP Device Manager

Specifications

Supported platforms Microsoft Windows 2003, 2008 and 2012 – MS Servers
Microsoft Windows XP Professional, Microsoft Windows 2003, 2008 and 2012 Server – DM Console and FTP Repository

Supported thin client operating systems Windows Embedded Standard 2009 and 7
Windows XP Embedded
Windows Embedded CE 5.0 and 6.0
HP ThinPro
HP Smart Zero
WES8
PCoIP

Software Components

HP Device Manager Console User interface console that allows system administrators to view details for each controlled device, organize device trees, create and maintain remote job definitions, and monitor tasks sent out to devices.

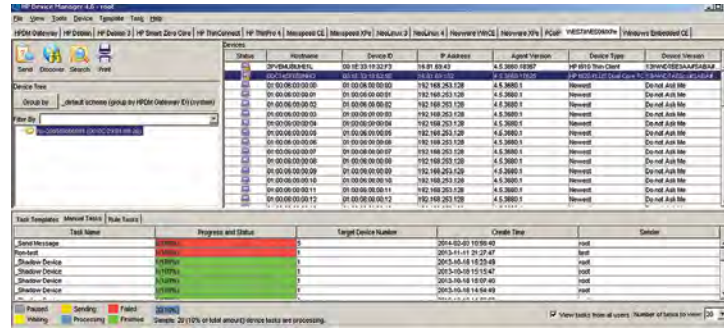
HP Device Manager Server Control for agents through the Device Manager gateway. Tasks, stored as Templates on the server, can be sent to each agent through each agent's respective gateway to perform commands as required. Device Manager requires a DBMS (PostGRES or, MS-SQL 2003, 2005 or 2012.)

HP Device Manager Gateway The link between devices and the Device Manager server. Devices register with the gateway when they are started. The system installed with the gateway also normally contains the PXE Server installed by the HP Device Manager.

Devices The agent software component is installed on client devices so that HP Device Manager can interact with them. These agents are embedded into each HP thin client operating system to enable Device Manager to manage them out-of-the-box, receiving task commands, executing them, and reporting on their status.

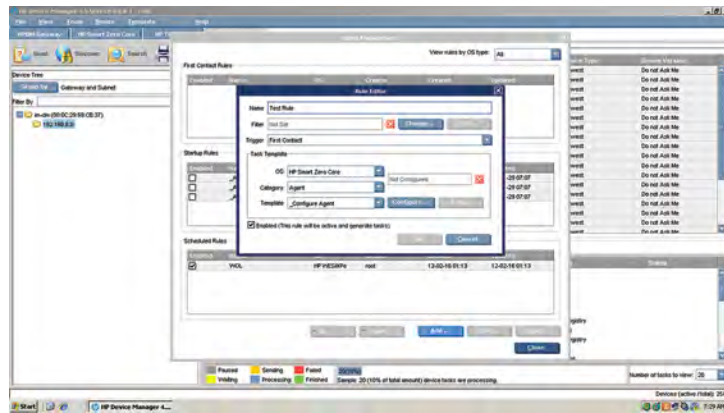
FTP Server Repository of components, images, etc. that can be uploaded from or downloaded to the agents at the request of the server.
Optional connection via FTPS or SFTP using Filezilla.

HP Device Manager Console



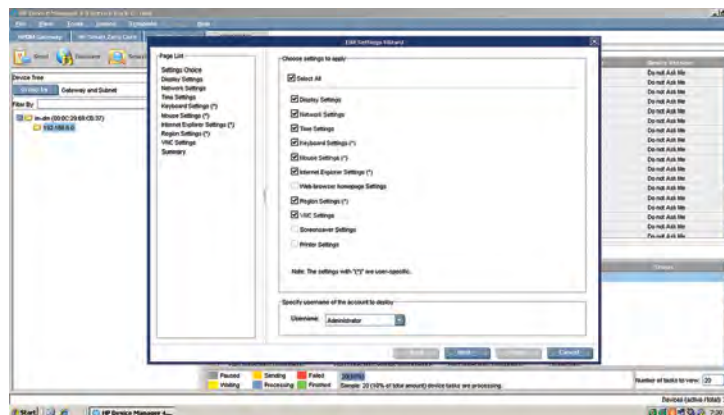
View and organize thin clients based on asset information, including DHCP tag, DNS or by walking an IP range.

Rules Management



Automate device deployment and common management tasks on first discovery, boot, or at scheduled times.

Settings Wizard



Easily configure and manipulate groups of thin clients based on business needs.

For more information visit hp.com/go/thincomputing

© 2015 Hewlett-Packard Development Company, L.P. The information contained herein is subject to change without notice. The only warranties for HP products and services are set forth in the express warranty statements accompanying such products and services. Nothing herein should be construed as constituting an additional warranty. HP shall not be liable for technical or editorial errors or omissions contained herein.

Windows 7, Windows 8 and Windows XP are U.S. registered trademarks of the Microsoft group of companies.

4AAA-5147ENW, August 2015

